



**WSS**  
WATER SPORTS SERIES

COBALT BOATS









## Cobalt surfing perfection.

Until now, wake surfing boats have compromised ride, comfort, top speed performance, and low speed maneuverability. That was before the WSS SURF from Cobalt. Combining Cobalt's award-winning smooth ride and the performance advantages of a stern drive, coupled with the enormous wake making capabilities of a surf boat - this was the perfect challenge! Now perfectly executed. And without compromise.

The WSS Surf combines a proven deep v hull design with innovative design to exceed the riders' demands. We developed a world class "wake maker" thanks to our patent pending SURF control system - which quickly and automatically tunes the boat's attitude and speed to the optimal SURF configuration - on either side of the boat. A fully customizable wake that provides smooth transitions, a wide push zone, and a solid pop. Keep the boat evenly weighted and switch the wave from each side in seconds without the need to re-distribute ballast and people.



**WSS**  
WATER SPORTS SERIES



## VOLVO PENTA FORWARD▶DRIVE

Volvo Penta does it again with the all-new Forward Drive propulsion system. Uniquely engineered with two forward-facing counter-rotating props that pull the boat through the water rather than pushing it, Forward Drive gives small-craft leisure boaters new found versatility. Whether wakesurfing, wakeboarding or simply cruising, Forward Drive allows boaters to enjoy endless days of fun without sacrifice. Armed with power trim and an enlarged trim plate, drivers can easily customize their wake for watersports, then level off for smooth cruising.







## Surfing Made Simple

With the touch of a button Cobalt's automated computer control surf system adjusts the Bi-Axis Surf Tabs to create the optimum surf wake either left or right. No need to transfer ballast load between tanks to achieve optimum surf wake.

- Fill ballast tanks
- Set GPS directed cruise control to desired speed
- Select surf control left or right
- Throttle up and surf

## On Plane with Full Ballast

In Performance Mode the surf tabs automatically deploy and adjust for a quick hole-shot through to running speed, easily getting the boat on plane with full ballast. No need to empty tanks for a quick run at speed.

## Performance of Total Trim Control

Exceptional wake surfing doesn't come at a compromise to Cobalt's softer, drier, faster ride. With the versatility of full-range power trim all the control and efficient operation remains. Drivers can easily customize the wake for surfing, wakeboarding or smooth cruising. Plus, Volvo's Forward Drive is uniquely engineered with two forward-facing counter-rotating props, which position the propellers to the front of the drive unit, well under the boat.

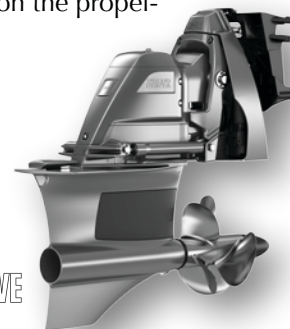
## The Cobalt WSS SURF

The best aspects of boating by providing a world-class ride combined with a superior surf wake.

Compromise Nothing!

**WSS**  
WATER SPORTS SERIES

**VOLVO PENTA FORWARD DRIVE**





# 200 WSS



## COBALT 200 WSS



### SPECIFICATIONS

Length Overall w/o Swim Platform	19' 4"	5.89 m
Length Overall w/ Swim Platform	20' 10"	6.35 m
Beam	8' 4"	2.54 m
Deadrise at Transom	20°	20°
Fuel Capacity	40 gal.	151 L
Freshwater Capacity	10 gal.	38 L
Bridge Clearance w/o Bimini	3' 11"	1.19 m
Bridge Clearance w/Tower	6' 10"	2.08 m
Draft Drive Up	24"	.61m
Draft Drive Down	37"	.94m
Dry Weight	3500 lbs.	1588 kg
Boat Certified Capacity	11 persons	
Boat Certified Capacity w/gear	1515 lbs.	687 kg

### VOLVO PENTA STERNDRIVE POWER

V6-200-G DP (non-cat) ltd qty	200 hp	149 PkW
V6-200-G SX (non-cat) ltd qty	200 hp	149 PkW
V6-200C-G DP	200 hp	149 PkW
V6-200C-G SX	200 hp	149 PkW
V6-240-G DP (non-cat) ltd qty	240 hp	179 PkW
V6-240-G SX (non-cat) ltd qty	240 hp	179 PkW
V6-240C-G DP	240 hp	179 PkW
V6-240C-G SX	240 hp	179 PkW
V6-280-G DP (non-cat) ltd qty	280 hp	209 PkW
V6-280C-G DP	280 hp	209 PkW
V8-300C-G DP	300 hp	224 PkW

### MERCUISER STERNDRIVE POWER

4.5 L MPI ECT-200 Alpha	200 hp	149 PkW
4.5 L MPI ECT-250 Alpha	250 hp	186 PkW
4.5 L MPI ECT-250 B3	250 hp	186 PkW
4.5 L MPI-200 Alpha (non-cat)	200 hp	149 PkW
6.2 L MPI ECT-300 B3	300 hp	224 PkW



# 210 WSS



## COBALT 210 WSS



### SPECIFICATIONS

Length Overall w/o Swim Platform	20' 4"	6.20 m
Length Overall w/ Swim Platform	22' 5"	6.83 m
Beam	8' 6"	2.59 m
Interior Cockpit Width	89"	2.26 m
Deadrise at Transom	20°	20°
Fuel Capacity	40 gal.	151 L
Freshwater Capacity	10 gal.	38 L
Bridge Clearance w/o Bimini	4' 0"	1.22 m
Bridge Clearance w/Arch	7' 7"	2.31 m
Draft Drive Up	24"	.61 m
Draft Drive Down	36"	.92 m
Dry Weight	3850 lbs.	1746 kg
Boat Certified Capacity	12 persons	
Boat Certified Capacity w/gear	1650 lbs.	748 kg

### VOLVO PENTA STERNDRIVE POWER

V6-200-G DP (non-cat) ltd qty	200 hp	149 PkW
V6-200-G SX (non-cat) ltd qty	200 hp	149 PkW
V6-200C-G DP	200 hp	149 PkW
V6-200C-G SX	200 hp	149 PkW
V6-240-G DP (non-cat) ltd qty	240 hp	179 PkW
V6-240-G SX (non-cat) ltd qty	240 hp	179 PkW
V6-240C-G DP	240 hp	179 PkW
V6-240C-G SX	240 hp	179 PkW
V6-280-G DP (non-cat) ltd qty	280 hp	209 PkW
V6-280C-G DP	280 hp	209 PkW
V8-300C-G DP	300 hp	224 PkW

### MERCUISER STERNDRIVE POWER

4.5 L MPI ECT-200 Alpha	200 hp	149 PkW
4.5 L MPI ECT-250 Alpha	250 hp	186 PkW
4.5 L MPI ECT-250 B3	250 hp	186 PkW
4.5 L MPI-200 Alpha (non-cat)	200 hp	149 PkW
6.2 L MPI ECT-300 B3	300 hp	224 PkW





220 **WSS**

## COBALT 220 **WSS**



### **SPECIFICATIONS**

Length Overall w/o Swim Platform	21' 4"	6.50 m
Length Overall w/ Swim Platform	22' 10"	6.96 m
Beam	8' 6"	2.54 m
Interior Cockpit Width	89"	2.54 m
Deadrise at Transom	20°	20°
Fuel Capacity	50 gal.	189 L
Freshwater Capacity	10 gal.	38 L
Bridge Clearance w/o Bimini	4' 0"	1.19 m
Bridge Clearance w/Arch	7' 7"	2.08 m
Draft Drive Up	24"	.61m
Draft Drive Down	36"	.94m
Dry Weight	3850 lbs.	1746 kg
Boat Certified Capacity	12 persons	
Boat Certified Capacity w/gear	1,695 lbs.	768 kg

### **VOLVO PENTA STERNDRIVE POWER**

V6-240-G DP (non-cat) ltd qty	240 hp	179 PkW
V6-240-G SX (non-cat) ltd qty	240 hp	179 PkW
V6-240C-G DP	240 hp	149 PkW
V6-240C-G SX	240 hp	179 PkW
V6-280-G DP (non-cat) ltd qty	280 hp	209 PkW
V6-280C-G DP	280 hp	209 PkW
V8-300C-G DP	300 hp	224 PkW
V8-350C-G DP	350 hp	261 PkW

### **MERCRUISER STERNDRIVE POWER**

4.5 L MPI ECT-250 Alpha	250 hp	186 PkW
4.5 L MPI ECT-250 B3	250 hp	186 PkW
6.2 L MPI ECT-300 B3	300 hp	224 PkW
6.2 L MPI ECT-350 B3	350 hp	261 PkW



# R<sub>3</sub>WSS



## COBALT R<sub>3</sub> WSS



### SPECIFICATIONS

Length Overall w/Swim Platform	23' 10"	7.26m
Beam	8' 6"	2.59 m
Interior Cockpit Width	95"	2.41 m
Deadrise at Transom	21°	21°
Fuel Capacity	50 gal.	189 L
Freshwater Capacity	10 gal.	38 L
Bridge Clearance w/o Bimini	62"	1.57 m
Bridge Clearance w/Bimini	89"	2.26 m
Bridge Clearance w/Arch	96"	2.44 m
Draft Drive Up	21"	.53 m
Draft Drive Down	37"	.94 m
Dry Weight	4450 lbs.	2018 kg
Boat Certified Capacity	12 persons	
Boat Certified Capacity w/gear	1800 lbs.	816 kg

### VOLVO PENTA STERNDRIIVE POWER

V8-300C-G DP	300 hp	221 PkW
V8-350C-G DP	350 hp	261 PkW
V8-380C DP	380 hp	283 PkW
V8-430CE DP (includes EVC)	430 hp	321 PkW

### MERCURISER STERNDRIIVE POWER

6.2 L MPI ECT-300 B3	300 hp	221 PkW
6.2 L MPI ECT-350 B3	350 hp	261 PkW
8.2 Mag ECT B3X	380 hp	283 PkW
8.2 Mag HO ECT B3X	430 hp	321 PkW





## COBALT R5 WSS



### SPECIFICATIONS

Length Overall w/Swim Platform	25' 8"	7.82 m
Beam	8' 6"	2.59 m
Interior Cockpit Width	95"	2.41 m
Deadrise at Transom	21°	21°
Fuel Capacity	50 gal.	189 L
Freshwater Capacity	10 gal.	38 L
Bridge Clearance w/o Bimini	64"	1.63 m
Bridge Clearance w/Bimini	91"	2.31 m
Bridge Clearance w/Arch	98"	2.49 m
Draft Drive Up	21"	.53 m
Draft Drive Down	37"	.94 m
Dry Weight	4880 lbs.	2214 kg
Boat Certified Capacity	14 persons	
Boat Certified Capacity w/gear	2250 lbs.	1021 kg

### VOLVO PENTA STERNDRIVE POWER

V8-300C-G DP	300 hp	221 PkW
V8-350C-G DP	350 hp	261 PkW
V8-380C DP	380 hp	283 PkW
V8-430CE DP (includes EVC)	430 hp	321 PkW

### MERCRUISER STERNDRIVE POWER

6.2 L MPI ECT-300 B3	300 hp	221 PkW
6.2 L MPI ECT-350 B3	350 hp	261 PkW
8.2 Mag ECT B3X	380 hp	283 PkW
8.2 Mag HO ECT B3X	430 hp	321 PkW





**R5** WSS  
**SURF**

**FORWARD»DRIVE**

## COBALT R5 SURF



### SPECIFICATIONS

Length Overall w/Swim Platform	25' 8"	7.82 m
Beam	8' 6"	2.59 m
Interior Cockpit Width	95"	2.41 m
Deadrise at Transom	21°	21°
Fuel Capacity	50 gal.	189 L
Freshwater Capacity	10 gal.	38 L
Bridge Clearance w/o Bimini	64"	1.63 m
Bridge Clearance w/Bimini	91"	2.31 m
Bridge Clearance w/Arch	98"	2.49 m
Draft Drive Up	21"	.53 m
Draft Drive Down	37"	.94 m
Dry Weight	4880 lbs.	2214 kg
Boat Certified Capacity	14 persons	
Boat Certified Capacity w/gear	2250 lbs.	1021 kg

### VOLVO PENTA STERNDRIVE POWER

V8-300C-G FWD DP	300 hp	221 PkW
V8-350C-G FWD DP	350 hp	261 PkW
V8-380C FWD DP	380 hp	283 PkW
V8-430CE FWD DP (includes EVC)	430 hp	321 PkW

**WSS**





# R7 WSS

## COBALT R7 WSS



### SPECIFICATIONS

Length Overall w/Swim Platform	27' 6"	8.38 m
Beam	8' 6"	2.59 m
Interior Cockpit Width	95"	2.41 m
Deadrise at Transom	21°	21°
Fuel Capacity	77 gal.	291 L
Freshwater Capacity	10 gal.	38 L
Bridge Clearance w/o Bimini	64"	1.63 m
Bridge Clearance w/Bimini	91"	2.31 m
Bridge Clearance w/Arch	98"	2.49 m
Draft Drive Up	21"	.53 m
Draft Drive Down	37"	.94 m
Dry Weight	5600 lbs.	2540 kg
Boat Certified Capacity	Yacht Certified	
Boat Certified Capacity w/gear	Yacht Certified	

### VOLVO PENTA STERNDRIIVE POWER

V8-300C-G DP	300 hp	221 PkW
V8-350C-G DP	350 hp	261 PkW
V8-380C DP	380 hp	283 PkW
V8-430CE DP (includes EVC)	430 hp	321 PkW

### MERCURISER STERNDRIIVE POWER

6.2 L MPI ECT-300 B3	300 hp	221 PkW
6.2 L MPI ECT-350 B3	350 hp	261 PkW
8.2 Mag ECT B3X	380 hp	283 PkW
8.2 Mag HO ECT B3X	430 hp	321 PkW



# 24SD **WSS**



## COBALT 24SD **WSS**



### **SPECIFICATIONS**

Length Overall w/ Swim Platform	24' 6"	7.47 m
Beam	8' 6"	2.59 m
Interior Cockpit Width	91"	2.31 m
Deadrise at Transom	21°	21°
Fuel Capacity	50 gal	189 L
Freshwater Capacity	10 gal	37.8 L
Holding Tank Capacity	10 gal	37.8 L
Bridge Clearance w/o Bimini	4' 11"	1.50 m
Bridge Clearance w/Arch	8' 1"	2.46 m
Draft Drive Up	25"	.63 m
Draft Drive Down	37"	.94 m
Dry Weight	4800 lbs	2177 kg
Boat Certified Capacity	13 persons	
Boat Certified Capacity w/gear	1850 lbs	839 kg

### **VOLVO PENTA STERNDRIIVE POWER**

V8-300C-G DP	300 hp	221 PkW
V8-350C-G DP	350 hp	261 PkW
V8-380C DP	380 hp	283 PkW
V8-430CE DP (includes EVC)	430 hp	321 PkW

### **MERCURUISER STERNDRIIVE POWER**

6.2 L MPI ECT-300 B3	300 hp	221 PkW
6.2 L MPI ECT-350 B3	350 hp	261 PkW
8.2 Mag ECT B3X	380 hp	283 PkW
8.2 Mag HO ECT B3X	430 hp	321 PkW



# 26SD **WSS**



## COBALT 26SD **WSS**



### **SPECIFICATIONS**

Length Overall w/ Swim Platform	26' 2"	7.97 m
Beam	8' 6"	2.59 m
Interior Cockpit Width	91"	2.31 m
Deadrise at Transom	21°	21°
Fuel Capacity	69 gal	261 L
Freshwater Capacity	10 gal	37.8 L
Bridge Clearance w/o Bimini	4' 11"	1.50 m
Bridge Clearance w/Arch	6' 7"	2.02 m
Draft Drive Up	27"	.69 m
Draft Drive Down	39"	.99 m
Dry Weight	5500 lbs	2495 kg
Boat Certified Capacity	Yacht Certified	
Boat Certified Capacity w/gear	Yacht Certified	

### **VOLVO PENTA STERNDRIIVE POWER**

V8-300C-G DP	300 hp	221 PkW
V8-350C-G DP	350 hp	261 PkW
V8-380C DP	380 hp	283 PkW
V8-430CE DP (includes EVC)	430 hp	321 PkW

### **MERCRUISER STERNDRIIVE POWER**

6.2 L MPI ECT-300 B3	300 hp	221 PkW
6.2 L MPI ECT-350 B3	350 hp	261 PkW
8.2 Mag ECT B3X	380 hp	283 PkW
8.2 Mag HO ECT B3X	430 hp	321 PkW