



COBALT BOATS
2012

TABLE OF CONTENTS

Selecting item will jump to section beginning.

	Introduction.	1
	Get to Know Cobalt Boats	2 - 7
10 <i>SERIES</i>	Model 200	8 - 9
	Model 210	10 - 11
	Model 220	12 - 13
	Model 230	14 - 15
	Model 222	16 - 17
	Model 232	18 - 21
	Model 242	22 - 25
BR <i>SERIES</i>	Model 262	26 - 29
	Model 276	30 - 33
	Model 296	34 - 37
	Model 302	38 - 41
WSS	Water Sports Series	42 - 43
A <i>SERIES</i>	Model A25	44 - 47
	Model A28	48 - 51
SD <i>SERIES</i>	Model 26SD.	52 - 55
	Model 243	56 - 29
3 <i>SERIES</i>	Model 273	60 - 63
	Model 303	64 - 67
	Model 323	68 - 71
	Additional Support Information	72 - 79
	Transferable Warranty	72
	Colors and Graphics Selections.	73
	Standard and Optional Equipment (photos).	74 - 75
	Standard and Optional Equipment (data grid)	76 - 79
	Cobalt Sports Lifestyle Accessories	80



COBALT BOATS

Cobalt is approaching fifty years of building boats in the classic tradition. We're a throwback of sorts, a company of the insistent belief that the very best work is done by hand. Of course, we understand the role that the tools of a digital age can play in the production of boats of immediate service and enduring value. That word there, "production." We're not so much interested in producing, as in building. It's a subtle difference, this boat-building. Machines can produce. They can produce just fine. But only a knowledgeable, caring, engaged human being can build: there the throwback, there the thinking of an older generation.

So we persist in the daily pursuit of the unreachable -- the design, manufacture, and ongoing support of the perfect runabout, the ideal performance cruiser. With our dealers worldwide, we give our minds and hearts to the winning of the hearts and minds of our customers, creating time and again a trust that feels just like family.

*Back: 2012 Cobalt A28
Front: 1968 Cobalt*



All Cobalt helm stations are fully upholstered and equipped with digital instrumentation

Transformational experiences, daily, since 1967.

At Cobalt we understand that opportunities for fundamental changes of attitude are pretty much what you make of them. And so, for five decades, we've built boats that speak to the heart of things, boats capable of producing sounds not entirely meant to be heard: the escaping ooohs and inescapable wows of sudden movement. A Cobalt coming quickly on plane can lead to a welcome, unasked amnesia, the cares of a workaday world gone in a nanosecond of spray, land-locked worries forgotten in the laughing thump to the chest that defines Cobalt performance.

The beguiling begins in the basics, in fundamentals of design and construction that have defined Cobalts for almost fifty years, these boats the product of ever-changing technical innovation and unchanging allegiance to the personal integrity of our boat-builders, their individual craftsmanship, their day-to-day decisions about when a boat is good enough to be a Cobalt.

The technicalities then: honeycomb composite construction with no wood anywhere structural; completely hand-laid hulls, reinforced with essentially indestructible Kevlar®; a proprietary barrier coat for improved cosmetics and blister resistance; taller hull sides for a stable, dry ride in rough water; over-sized, over-strong, stainless-steel hardware; cushioned lids with knuckled hinges for easy, open access to storage compartments large and larger still; graphics deep, untouched, and untouchable in the gelcoat. Herewith, the ingredients of safe, predictable, thoroughly enjoyable use of a boat for the generations.

Life is uncertain.

Own a boat that isn't. And then put all your expectations out there before you, ready to be reexamined.





The bandwagon will be along shortly.

For five decades Cobalt captains have known genuine pride of ownership, an appreciation of the value built into their boats that the passing years have only enhanced. Those captains have also known the envy of perfect strangers, a mixed blessing that the passing years have only exaggerated. In this matter, regard some ancient seagoing wisdom from Neodesha, Kansas: many are called; few are chosen.

As an owner of a Cobalt boat – any of the carefully envisioned models in the pages just ahead – you will come to understand the degree to which your new Cobalt sets you apart from any semblance of the crowd. As, soon enough, the champagne sparkle of your first family cruise becomes the remembered moments of a lifetime on the water, your Cobalt will show you performance of an inimitable sort.

Begin with Cobalt's legendary extended running surface and its consequent quicker planing, firm and true turns, and minimized bow rise. At high speeds feel your Cobalt's exceptional stability, its effortless cornering on the rails. Give your guests the softest of rides in the roughest of seas and then, on a quiet entry back to the harbor, watch the long and longing looks coming your way.

As knowledgeable boaters around the world aspire to Cobalt ownership, please wave back, chosen one.



Matched perfectly to each model design the Cobalt deep-V hull continues to lead an entire industry with performance beyond speed.



The extended running surface provides more hull in the water aft of the transom. A concept first introduced by Cobalt in 1985



A time honored first, the bow scuff plate is yet another example of Cobalt leading the boating industry in innovation.





The Cobalt exclusive swim step is a simple and elegant solution... Genius.



From the industry's first flip-lip bolster captain's chairs, to forward/aft facing passenger lounges, to three position rear sunpad/bench seats, to multiple configuration bow cushions, Cobalt interiors give you a place to relax how and wherever you choose.

Customer inspired innovations are a hallmark of Cobalt conveniences. For example the quick connect fender clips, and bimini top turnbuckle supports made of stainless steel that are easily adjusted.

Disco ball not included.

Hello, finger-pointing dance-kings. Glad you've come, channel-swimmers and back-floaters everywhere. No matter what your notion of fun on the water, Cobalt boats are ready, raring to go anywhere the good times roll.

Cobalt makes boat after boat so perfectly suited to its owners that, once aboard, there is no place in the world they'd rather be. Here are boats for people who have worked hard, who have accomplished, who are now ready to enjoy to the fullest the success that their efforts have brought them.

So welcome aboard, achievers, in your thoughtful appreciation of timeless good taste and inspired functionality. You remember that Cobalt means interiors that anticipate your needs for space and its comfortable usage at cruise and at anchor alike. You expect electronic entertainment systems that turn coves into concert halls. You understand Cobalt ease and accommodation and accessibility and comfort and safety astern, where so many of your truly

storied festivities take place, with Cobalt innovation so sweeping that patents are called for. In fact, reports of me-tooism regarding the Cobalt swim platform have already begun to arrive, as would-be competitors struggle to copy our revolutionary thinking about marine design, aft and forward alike.

You know that the little details of a boat's construction do their work quietly, contributing to big enjoyment when no one but you need notice the integrated bow eye with scuff plate, the pop-out stainless-steel ski tow, the structural genius of the bimini top, the quick-release fender system, the flip-lip seat bolster at the helm, or the dozens of Cobalt firsts which now guide an entire industry.

So there, social director, you have it: romance, adventure, hilarity, fiberglass,

And three out of four ain't bad.



Enough aspiration already.

The 200 will show you nuances of design and construction, instances of effortless performance once thought possible only in far larger boats. You've waited long enough.

The 200 throbs hearts with a V-6 engine, jumps on plane, hangs true and tight in the turns, does so handily, while creating surprising fuel efficiencies. Cobalt utilizes Free Space Reclamation (FSR) to maximize interior space in the cockpit, and free space it becomes when you are out on the water with friends and family. With walk-about, lay-about, stow-away spaciousness at every turn, the 200 creates its own sort of convenience, comfort, and simple luxury, from the standard digital instrumentation to the wraparound bow to the 89" wide cockpit with the port chaise lounge, the 200 adapts at a touch from tanning salon to a safe, secure seating environment.

The 200 goes down to the sea trailerable, in strength, with dashing style. The sculpted hull speaks for itself, while the long, purposeful lines sweep and flow to catch a perfect light, the 200's a profile classic in every subtle detail.

Take the 200 home. And someday comes today.

WSS
Water Sports Series Compatible



200 Specifications

Length Overall w/o Swim Platform	19' 4"	5.89 m
Length Overall w/Swim Platform	20' 10"	6.35 m
Beam	8' 4"	2.54 m
Interior Cockpit Width	89"	2.26 m
Deadrise at Transom	20°	20°
Fuel Capacity	40 gal.	151 L
Freshwater Capacity	10 gal.	38 L
Bridge Clearance w/o Bimini	3' 11"	1.19 m
Bridge Clearance w/Tower	6' 10"	2.08 m
Draft Drive Up	24"	.61 m
Draft Drive Down	37"	.94 m
Dry Weight	3500 lbs.	1588 kg
Boat Certified Capacity	11 persons	
Boat Certified Capacity w/Gear	1515 lbs.	687 kg

MerCruiser Sterndrive Power

4.3 L MPI ECT Alpha	220 php	164 PkW
4.3 L MPI ECT B3	220 php	164 PkW
5.0 L MPI ECT Alpha	260 php	194 PkW
5.0 L MPI ECT B3	260 php	194 PkW
350 Mag MPI ECT B3	300 php	224 PkW

Volvo Penta Sterndrive Power

4.3 GXi DP (non catalyst)	225 php	168 PkW
4.3 GXi SX (non catalyst)	225 php	168 PkW
5.0 GXiC DP	270 php	201 PkW
5.0 GXiC SX	270 php	201 PkW
5.7 GiC DP	300 php	224 PkW

10 SERIES



Lingering euphoria after a massive adrenalin rush. Now that's a test drive.

Your initial responses to the 210 will be confirmed across years of exhilarating performance and dependable enjoyment.

Thank Cobalt engineers for a design that delivers one of the broadest cockpit widths in the marine industry, creating a stability of dry ride, a spread-out-and-relax roominess that surrounds you and your guests with the hand-craftsmanship, the unmistakable fit and finish of interior spaces arising from classic Mediterranean notions of use and beauty. The 210 means big fun – explosive hole-shots, easy and extended zooming, the tight high-speed turns skiers and boarders want – while affording you some remarkable efficiencies in fuel management. The swim platform shows off aft of a true walk-thru at the transom, there to make boarding, from the dock or from a late-day swim, a graceful affair for the ten-plus friends who might, now and then, get to come along.

The 210 will steal your heart away from the moment you lay a lingering eye on her. See you later, smitten.



210 Specifications

Length Overall w/o Swim Platform	20' 4"	6.20 m
Length Overall w/Swim Platform	22' 5"	6.83 m
Beam	8' 6"	2.59 m
Interior Cockpit Width	89"	2.26 m
Deadrise at Transom	20°	20°
Fuel Capacity	40 gal.	151 L
Freshwater Capacity	10 gal.	38 L
Bridge Clearance w/o Bimini	4' 0"	1.22 m
Bridge Clearance w/Arch or Tower	7' 7"	2.31 m
Draft Drive Up	24"	.61 m
Draft Drive Down	36"	.92 m
Dry Weight	3850 lbs.	1746 kg
Boat Certified Capacity	12 persons	
Boat Certified Capacity w/Gear	1650 lbs.	748 kg

MerCruiser Sterndrive Power

4.3 L MPI ECT Alpha	220 php	164 PkW
4.3 L MPI ECT B3	220 php	164 PkW
5.0 L MPI ECT Alpha	260 php	194 PkW
5.0 L MPI ECT B3	260 php	194 PkW
350 Mag MPI ECT B3	300 php	224 PkW

Volvo Penta Sterndrive Power

4.3 GXi DP (non catalyst)	225 php	168 PkW
4.3 GXi SX (non catalyst)	225 php	168 PkW
5.0 GXiC DP	270 php	201 PkW
5.0 GXiC SX	270 php	201 PkW
5.7 GiC DP	300 php	224 PkW

WSS

Water Sports Series Compatible

10 SERIES 210



Discover the difference between memorable and unforgettable.

The details of a great boat accumulate in ways that you may never notice. But feel free to imagine.

Come aboard the 220, and know comfort and convenience typically found only in far larger boats. Experience a spaciousness that maximizes flexibility in your use of the boat, thanks to Free Space Reclamation (FSR), Cobalt's studied minimization of heretofore unused space. The 220 makes idealized use of every square inch of its wide and sturdy stance, the stadium seating key to the easy accommodation of a dozen guests and their gear. And the swim step, of course, Cobalt's game-changing, patented contribution to safety, convenience, and accessibility makes boarding a breeze. Memories gather naturally under the 220's aluminum wakeboard arch – simply foldable, by the way – an addition that makes your boat as athletic as it is roomy. You decide exactly how the heart-thumps should occur, on board or otherwise.

Then curl up. And remember.

WSS
Water Sports Series Compatible



220 Specifications

Length Overall w/o Swim Platform	21' 4"	6.50 m
Length Overall w/Swim Platform	22' 10"	6.96 m
Interior Cockpit Width	89"	2.26 m
Beam	8' 6"	2.54 m
Deadrise at Transom	20	20
Fuel Capacity	50 gal.	189 L
Bridge Clearance w/o Bimini	3' 11"	1.19 m
Bridge Clearance w/Tower	6' 10"	2.08 m
Draft Drive Up	24"	.61m
Draft Drive Down	37"	.94m
Dry Weight	3700 lbs.	1678 kg
Boat Certified Capacity	12 persons	
Boat Certified Capacity w/Gear	1695 lbs.	768 kg

MerCruiser Sterndrive Power

4.3 L MPI ECT Alpha	220 php	164 PkW
4.3 L MPI ECT B3	220 php	164 PkW
5.0 L MPI ECT Alpha	260 php	194 PkW
5.0 L MPI ECT B3	260 php	194 PkW
350 Mag MPI ECT B3	300 php	224 PkW
377 Mag MPI ECT B3	300 php	224 PkW

Volvo Penta Sterndrive Power

4.3 GXi DP (non catalyst)	225 php	168 PkW
4.3 GXi SX (non catalyst)	225 php	168 PkW
5.0 GXiC DP	270 php	201 PkW
5.0 GXiC SX	270 php	201 PkW
5.7 GiC DP	300 php	224 PkW
5.7 GXiC DP	320 php	239 PkW

10 SERIES 220



End that burning curiosity. End it!

The 230 has proven itself quietly exceptional, gathering the nuances of a well-made boat in a look and feel that blend carefree hours now with years of reliable value.

The question comes, “What do I really want in my new Cobalt?”

And the 230 answers back, speaking of stability in a soft, smooth ride even in rough chop. Of sudden planings and cranked turns. Of pragmatism in all best use of interior space, a configuration setting the largest L-lounge in its class aft of dual buckets, of a bow whose seating is every bit as inviting as the 230’s flared lines would have you believe. Because unabashed good looks matter to you too, the 230 brings along masterful detailing at the helm station, in the profligate use of stainless steel bow to stem, in the rich textures of the upholstery. All in a boat that casually takes you all down the years in style and contentment.

In the case of the Cobalt 230, it’s not at all too much to ask.



WSS
Water Sports Series Compatible

10 **SERIES** 230

230 Specifications

Length Overall w/o Swim Platform	21' 10"	6.65 m
Length Overall w/Swim Platform	24' 0"	7.31 m
Beam	8' 6"	2.59 m
Interior Cockpit Width	89"	2.26 m
Deadrise at Transom	20	20
Fuel Capacity	50 gal.	189 L
Freshwater Capacity	10 gal.	38 L
Bridge Clearance w/o Bimini	4' 3"	1.30 m
Bridge Clearance w/Arch or Tower	7' 4"	2.24 m
Draft Drive Up	24"	.61 m
Draft Drive Down	36"	.91 m
Dry Weight	4150 lbs.	1882 kg
Boat Certified Capacity	12 persons	
Boat Certified Capacity w/Gear	1650 lbs.	748 kg

MerCruiser Sterndrive Power

5.0 L MPI ECT B3	260 php	194 PkW
350 Mag MPI ECT B3	300 php	224 PkW
377 Mag MPI ECT B3	320 php	239 PkW
8.2 Mag ECT B3	380 php	283 PkW
8.2 Mag HO ECT B3	430 php	321 PkW

Volvo Penta Sterndrive Power

5.0 GXiC DP	270 php	201 PkW
5.7 GiC DP	300 php	224 PkW
5.7 GXiC DP	320 php	239 PkW
8.1 GiC DP	400 php	298 PkW



Here's your boat, dream weaver.

The Cobalt 222 serves as a workable reflection of your very good judgment, your understanding of exactly where you have always wanted to go.

A paradigm of self-sufficiency, the 222 accumulates all appropriate muscle, the necessary space for major partytime, and the responsiveness of a lifelong friend. Here is the reliability you expect from the industry's most-copied boats, the big bowrider that will take you off toward a horizon you have imagined for a very long time. Take the 222's ergonomic helm, and feel the soothing reassurance of a deep-V hull taking on big water in a reverie of time and motion, these abstractions made possible by Cobalt's hard-headed insistence on technology in the service of handmade excellence.

And therefore, the functionality of the helm with GPS and the cruise control, the synergy of the walk-thru and the sunpad, the so solid protections of stainless steel everywhere, the thoughtful placement of storage compartments, their interiors finished and fine and ready for more.

Much like you, achiever. Much like you.



WSS
Water Sports Series Compatible

222 Specifications

Length Overall w/o Swim Platform	21' 0"	6.40 m
Length Overall w/Swim Platform	23' 7"	7.11 m
Beam	8' 6"	2.59 m
Interior Cockpit Width	88"	2.25 m
Deadrise at Transom	21°	21°
Fuel Capacity	50 gal.	189 L
Freshwater Capacity	10 gal.	38 L
Bridge Clearance w/o Bimini	4' 9"	1.45 m
Bridge Clearance w/Arch or Tower	7' 6"	2.29 m
Draft Drive Up	26"	.66 m
Draft Drive Down	36"	.91 m
Dry Weight	4100 lbs.	1860 kg
Boat Certified Capacity	12 persons	
Boat Certified Capacity w/Gear	1800 lbs.	816 kg

MerCruiser Power Selections

5.0 L MPI ECT Alpha	260 php	194 PkW
5.0 L MPI ECT B3	260 php	194 PkW
350 Mag MPI ECT B3	300 php	224 PkW
377 Mag MPI ECT B3	320 php	239 PkW

Volvo Penta Power Selections

5.0 GXiC SX	270 php	201 PkW
5.0 GXiC DP	270 php	201 PkW
5.7 GiC DP	300 php	224 PkW
5.7 GXiC DP	320 php	239 PkW







When movement is all that matters.
When movement matters not at all.



The 232 is a boat for all seasons, for all occasions, for all the minutes that matter most. It promises to be, to do everything you want.

You remember the proverb. "The journey is the destination." Or vice versa?

If you're seeking an ideal combination of the spaciousness and luxurious comfort of a larger bowrider with the agility and easy control of a smaller Cobalt, the 232 becomes your boat of choice. It invites quiet conversation at cruise, such is the smoothness, the grace of its ride. It stows the materials of the good life in brilliantly concealed compartments bow to stern. It adapts to the activity of the moment, its seating adjustable, enjoyable in any configuration. It will charge hard to a luncheon waiting across the lake. It will settle in for easy embrace of a coming sunset with no particular place to go.

Other than right here. Right now. Right on, 232. Again.

232
BR SERIES

232

232 Specifications

Length Overall w/o Swim Platform	22' 6"	6.86 m
Length Overall w/Swim Platform	25' 1"	7.64 m
Beam	8' 6"	2.59 m
Interior Cockpit Width	89"	2.26
Deadrise at Transom	21	21
Fuel Capacity	50 gal.	189 L
Freshwater Capacity	10 gal.	38 L
Bridge Clearance w/o Bimini	4' 9"	1.45 m
Bridge Clearance w/Arch or Tower	7' 6"	2.29 m
Draft Drive Up	26"	.66 m
Draft Drive Down	36"	.91 m
Dry Weight	4165 lbs.	1886 kg
Boat Certified Capacity	12 persons	
Boat Certified Capacity w/Gear	1800 lbs.	816 kg

MerCruiser Sterndrive Power

350 Mag MPI ECT B3	300 php	224 PkW
377 Mag MPI ECT B3	320 php	239 PkW
8.2 Mag ECT B3	380 php	283 PkW
8.2 Mag HO ECT B3	430 php	321 PkW

Volvo Penta Sterndrive Power

5.7 GiC DP	300 php	224 PkW
5.7 GXiC DP	320 php	239 PkW
8.1 GiC DP	400 php	298 PkW

WSS

Water Sports Series Compatible



BR SERIES





COBALT

Lifelong contentment, one deep laugh at a time.



The Cobalt 242 puts convenience and intelligent practicality at the service of perfect minutes hereabouts.

Genetics predispose, we suppose. In inborne attitudes that call for optimism, that support your sense of the possible. Much like your boat which, in the case of the Cobalt 242, means identifying characteristics almost fifty years in the making. Ride and performance and good looks that gather from all the expected Cobalt DNA. Look here at the wide bow walk-thru doors, the striking elegance of the cockpit, the immediate and absolute control at the helm, the wraparound welcome for three times today's guest list, the extended and now laddered swim platform with an optional lighting system, an evolutionary porta-potti, an aft sunpad with adjustable backrest. All the components of an ideal day on the water with not an inch of unused space.

Amid and all around the mirth of the moment, you'll in your 242 find a deep-down dependability. It's the Cobalt family way.

242
BR SERIES

242

242 Specifications

Length Overall w/o Swim Platform	23' 11"	7.29 m
Length Overall w/Swim Platform	25' 11"	7.90 m
Beam	8' 6"	2.59 m
Interior Cockpit Width	87"	2.20 m
Deadrise at Transom	21	21
Fuel Capacity	50 gal.	189 L
Freshwater Capacity	10 gal.	38 L
Holding Tank Capacity		
Bridge Clearance w/o Bimini	5' 3"	1.60 m
Bridge Clearance w/Arch or Tower	8' 2"	2.49 m
Draft Drive Up	21"	.53 m
Draft Drive Down	37"	.94 m
Dry Weight	4600 lbs.	2087 m
Boat Certified Capacity	13 persons	
Boat Certified Capacity w/Gear	2250 lbs.	1021 kg

MerCruiser Sterndrive Power

350 Mag MPI ECT B3	300 php	224 PkW
377 Mag MPI ECT B3	320 php	239 PkW
8.2 Mag ECT B3	380 php	283 PkW
8.2 Mag HO ECT B3	430 php	321 PkW

Volvo Penta Sterndrive Power

5.7 GiC DP	300 php	224 PkW
5.7 GXiC DP	320 php	239 PkW
8.1 GiC DP	400 php	298 PkW

WSS

Water Sports Series Compatible



BR SERIES





Because there's just no such thing as too much fun.



Conceived on a Friday afternoon, brought about by boatbuilders who really, really like what they do, the 262 is a hoot. And it's all intentional.

First, you must know that you have room here for fifteen, only a couple of whom must behave themselves. The 262's layout creates open, flowing movement from the side walk-thru astern throughout the interior and its show-stopping good looks, over-sized storage molded into the cockpit. Attractions astern involve most of all a gigantic L-lounge and a beach of a sunpad. The appeals to the senses are subtle but pervasive, from the miracle sheen of the gelcoat to Corian in the head compartment, from the automotive luxury of the upholstery to the broadcast quality of the stereo system.

At cruise the 262 is at once authoritative, nimble, and quick, with you in firm, obvious command at a no-nonsense helm with all instrumentation right there, the turns tight and aggressive, the wake appropriate to the athletic activity out behind.

Again this weekend you'll find cool waters, warm sunshine, a gentle breeze, and a boat that will encourage . . . no, demand . . . that the good times roll.

262
BR SERIES

262

262 Specifications

Length Overall w/o Swim Platform	25' 7"	7.80 m
Length Overall w/Swim Platform	27' 7"	8.41 m
Beam	8' 6"	2.59 m
Interior Cockpit Width	89"	2.26 m
Deadrise at Transom	21	21
Fuel Capacity	73 gal.	276 L
Freshwater Capacity	10 gal.	38 L
Holding Tank Capacity		
Bridge Clearance w/o Bimini	5' 3"	1.60 m
Bridge Clearance w/Arch or Tower	8' 2"	2.49 m
Draft Drive Up	21"	.53 m
Draft Drive Down	37"	.94 m
Dry Weight	5425 lbs.	2461 kg
Boat Certified Capacity	15 persons	
Boat Certified Capacity w/Gear	2585 lbs.	1173 kg

MerCruiser Sterndrive Power

377 Mag MPI ECT B3	320 php	239 PkW
8.2 Mag ECT B3	380 php	283 PkW
8.2 Mag HO ECT B3	430 php	321 PkW

Volvo Penta Sterndrive Power

5.7 GiC DP	300 php	224 PkW
5.7 GXiC DP	320 php	239 PkW
8.1 GiC DP	400 php	298 PkW

WSS

Water Sports Series Compatible



BR SERIES





For those days when “long-term objective” means a late supper at the club.



Optional Windlass with anchor, chain and line

Own the 276, a sure sign of certain success. With quiet achievement all around, here's a boat for the ages.

On the one hand you have all this elegance: classic lines flowing toward sea-level at the molded swim platform and its polished stainless, double-needle diamond stitchery on the upholstery, deeper colors in suede-soft vinyls – creams and ivories and sands now, a dash arguably the most gorgeous ever to grace a Cobalt.

On the other hand you look overhead to an arch that is bold, edgy alright, its whoosh and swoop matched to that of the hull, a bimini top fusing high style and high performance. Then you sit in a bow that is actually elongated, but looking longer still, a walkway extending all the way to the windlass and, well, you're not sure if you've purchased a bowrider or a performance cruiser, if your 276 is subtle or something else.

Not to worry, a glassine cove waits just ahead. The one you love sits next to you, and you'll have time to decide. All the time in this sweet old world.

276
BR SERIES

276

Specifications

Length Overall w/Swim Platform	27' 6"	8.38 m
Beam	8' 6"	2.59 m
Interior Cockpit Width	87"	2.20 m
Deadrise at Transom	21	21
Fuel Capacity	95 gal	360 L
Freshwater Capacity	10 gal	37.8 L
Bridge Clearance w/o Bimini	4' 11"	1.50 m
Bridge Clearance w/Arch or Tower	6' 7"	2.02 m
Draft Drive Up	27"	.69 m
Draft Drive Down	39"	.99 m
Dry Weight	5500 lbs	2495 kg
Boat Certified Capacity	Yacht Certified	
Boat Certified Capacity w/Gear	Yacht Certified	



MerCruiser Sterndrive Power

8.2 Mag ECT B3	380 php	283 PkW
8.2 Mag HO ECT B3	430 php	321 PkW

Volvo Penta Sterndrive Power

8.1 GiC DP	400 php	298 PkW
------------	---------	---------



BR SERIES





Love. Happiness. Truth. Beauty. To go.



Single or twin engine, the 296 keeps its promises.

For a boat of its length and beam, the single-engine 296 jumps on plane with noteworthy suddenness. With two engines, the word is 'launch.' That said, the ride here is hushed, soothing, and soft, much like the 296's interior, with a layout here that is both custom –from throw pillows to club configuration – and unlike any other bowrider's. A space more limousine than marine. The comfort accumulates astern in all-weather, personalized luxury straight out of your living room. Wraparound conversation is waiting in the bow.

The options list is meaningful – refrigerators and joysticks for docking and touch-screen GPS and arches with lighting. The power options are stout and authoritative. The hull yearns for open water, ready to show off handling at once robust and responsive.

The 296 then, a loving marriage of refinement and raw power. A diamond on an aquamarine sea.

296
BR SERIES

296

296 Specifications

Length Overall w/Swim Platform	30' 2"	9.19 m
Hull Length	28' 5"	8.69 m
Beam	9' 5"	2.90 m
Interior Cockpit Width	8' 8"	2.64 m
Deadrise at Transom	21	21
Fuel Capacity	123 gal	457 L
Freshwater Capacity	18 gal	68 L
Holding Tank Capacity	18 gal	68 L
Bridge Clearance w/o Bimini	4' 11"	1.49 m
Bridge Clearance w/Arch	7' 11"	2.41 m
Draft Drive Up, Single Engine.	25"	.64 m
Draft Drive Down, Single Engine.	37"	.94 m
Draft Drive Up, Twin Engine.	27"	.69 m
Draft Drive Down, Twin Engine.	39"	.99 m
Dry Weight, w/Single Engine	7350 lbs	3334 kg
Dry Weight, w/Twin Engines	8740 lbs	3964 kg
Boat Certified Capacity	Yacht Certified	
Boat Certified Capacity w/Gear	Yacht Certified	

MerCruiser Power Selections

8.2 Mag ECT B3	380 php	283 PkW
8.2 Mag HO ECT B3	430 php	321 PkW
Twin 350 Mag MPI ECT B3	300 php	224 PkW
Twin 377 Mag MPI ECT B3	320 php	239 PkW
Twin 8.2 Mag ECT B3	380 php	283 PkW
Twin 8.2 Mag HO ECT B3	430 php	321 PkW

Volvo Penta Power Selections

8.1 GiC DP	400 php	298 PkW
Twin 5.7 GiC DP	300 php	224 PkW
Twin 5.7 GXiC DP	320 php	239 PkW
Twin 8.1 GiC DP	400 php	298 PkW



Vinyl Aft Seatback



Optional Galley



Throw Cushion Seatbacks



*Standard Interior
with Throw Cushions*



Attention, perfectionists, idealists, and
the truly obsessed everywhere.



Engineered perfection will always remain an elusive, if admirable, goal. Please don't tell the 302.

The superlatives tell part of the story -- the largest bowrider in the Cobalt line, for example, or the most spacious cockpit in its class -- and the 302's features add their share to the argument: a sunpad large enough for side-by-side tanning, huge bow seats with new standards for forward comfort, carefully placed storage, power options ranging from aggressive to more aggressive still. Sun protection available via the bimini top, or the fiberglass hardtop with arch.

But perfection is an inclusive term, and little things can mean a lot: molded stereo speakers set at precise angles for ideal acoustics, an armrest at the throttle, a dimmer for the backlit gauges, gas assists on the ski locker, double latches at the anchor door, water-resistant rubber fillings for the canvas snaps, the wiring loomed and supported everywhere.

Tour the 302. Poke about. Open some hatches. Touch, look, listen, and prepare to smile

302
BR SERIES

302

302 Specifications

Length Overall w/o Swim Platform	29' 9"	9.07 m
Length Overall w/Swim Platform	31' 6"	9.60 m
Beam	9' 11"	3.02 m
Interior Cockpit Width	8' 8"	2.64 m
Deadrise at Transom	22	22
Fuel Capacity	150 gal.	568 L
Freshwater Capacity	30 gal.	114 L
Holding Tank Capacity		
Bridge Clearance w/o Bimini	5' 9"	1.75 m
Bridge Clearance w/Arch or Tower	8' 2"	2.49 m
Draft Drive Up	26"	.66 m
Draft Drive Down	44"	1.12 m
Dry Weight	9880 lbs.	4481 kg
Boat Certified Capacity	Yacht Certified	
Boat Certified Capacity w/Gear	Yacht Certified	

MerCruiser Sterndrive Power

Twin 350 Mag MPI ECT B3	300 php	224 PkW
Twin 377 Mag MPI ECT B3	320 php	239 PkW
Twin 8.2 Mag ECT B3	380 php	283 PkW
Twin 8.2 Mag HO ECT B3	430 php	321 PkW

Volvo Penta Power Selections

Twin 5.7 GiC DP	300 php	224 PkW
Twin 5.7 GXiC DP	320 php	239 PkW
Twin 8.1 GiC DP	400 php	298 PkW





We just amplify the peaks life already gives you.

Let's understand from the beginning that the Cobalt Water Sports Series boats have been built for wide-open, all-out adrenaline at the end of a rope.

Now, at the completion of three years of research and development, the Cobalt Water Sports Series (WSS) stands fully prepared for you endorphin-hogging high-flyers and your demands for large, predictable wakes. The final refinements on the 232, 242, and 262 WSS boats focus on a ballast system that gives captain and boarder complete flexibility in the choice of wake, three tanks moving up to 700 pounds of ballast water in and out, selectively, each independent of the other two. No all-or-nothing deals here.

Meanwhile, the new Touch Tech system stores profiles of individual skiers and boarders, remembers their preferences for the ride out back. Then, cruise control, ballast, and trim tab adjust to deliver the exact speed and sort of wake that matches those preferences. A simple tap at Touch Tech makes it all happen. An upgradeable GPS is now available, its touch-screen right there to show the way.

These new features complement the WSS boats' intrinsic advantage in combining all the best features of an inboard with the versatility and efficiency of a stern drive.

Water Sports Tower with Bimini Top – Pro-athlete strong with life-long good looks, all heavy-gauge anodized, polished aluminum stock, precision-machined billet fittings. Folds easily. Integrated racks for four boards in rattle-free, solid security. A flip of a swivel lock swings the racks inboard for easy access. Add optional tower spotlights, a driver's rear-view mirror, and speakers with high-horse amplifiers.

Exterior Graphics – A split gelcoat design in any combination of standard Cobalt colors, plus a chrome WSS hull emblem and a WSS badge at the transom. A black chrome and altogether checkered Cobalt insignia. Visit the Design Your Dream area of our website at CobaltBoats.com.

Interior Styling – A WSS helm with a satin finish to the dash. Water Sports badging and exterior-matched color piping in the upholstery, bow to stern.



PACKAGES AVAILABLE ON MODELS:

200, 210, 220, 222, 230, 232, 242, 262



Features and Options	10 SERIES				BR SERIES			
	200	210	220	230	222	232	242	262
Razor Folding Water Sports Tower	S	S	S	S	N/A	N/A	N/A	N/A
SwitchBlade Folding Water Sports Tower	N/A	N/A	N/A	N/A	S	S	S	S
Integrated Board Racks	S	S	S	S	S	S	S	S
Tower Bimini Top	S	S	S	S	S	S	S	S
Sof Trac Platform Mat	S	S	S	S	S	S	S	S
w/iPod™ Dock	S	S	S	S	S	S	S	S
(Piping Colors, Badging)	S	S	S	S	S	S	S	S
2 Color Sport WSS Hull Graphic	S	S	S	S	S	S	S	S
3 Color Classic WSS Hull Graphic	O	O	O	O	S	S	S	S
Cruise Control (GPS)	O	O	O	O	O	O	O	O
Tower Speakers	O	O	O	O	O	O	O	O
Transom Stereo Remote	O	O	O	O	O	O	O	O
Tower Lights	O	O	O	O	O	O	O	O
Driver's Rear View Mirror	O	O	O	O	O	O	O	O
Premium Sound Upgrade	O	O	O	O	O	O	O	O
Satellite Radio	O	O	O	O	O	O	O	O



Tower Lights and Speakers



Folding Water Sports Tower



Integrated Board Racks



Touch-Tech Display for Cruise and Ballast Controls



The expected new-model clichés do not apply.



The A25 represents genuine innovation, design and engineering capable of changing your perceptions of what a large runabout might be. What to make of all this?

With last year's introduction of the A25, Cobalt Boats returned to our roots in marine design, to fundamental enhancements of the boating experience. Amid the pressures of recurring new model years, it's tempting to claim "innovations" that amount to little more than window-dressing. Not here, not in these A-Series boats.

Observe the hull, where only a five-piece mold could produce the functionality of a running surface with consequent reduced bow rise at acceleration, more stability in turns, more comfort at cruise. Walk astern to the deployable swim platform with a patented step. Take the helm with new Cobalt Touch Tech navigation. Notice the easier boarding on the A25, its revolutionary extensions of storage in both access and convenience, the flexibility of the seating arrangements, the ergonomics throughout.

Your Cobalt dealer will explain further. Expect a discussion you've not heard before.

A25
A SERIES

A25 Specifications

Length Overall w/Swim Platform	25' 6"	7.77 m
Beam	8' 6"	2.59 m
Interior Cockpit Width	89"	2.26 m
Deadrise at Transom	21	21
Fuel Capacity	50 gal.	189 L
Freshwater Capacity	10 gal.	38 L
Bridge Clearance w/o Bimini	4' 11"	1.50 m
Bridge Clearance w/Arch or Tower	8' 2"	2.49 m
Draft Drive Up	30"	.76 m
Draft Drive Down	39"	.99 m
Dry Weight	5,125 lbs.	2,325 kg
Boat Certified Capacity	15 persons	
Boat Certified Capacity w/Gear	2,065 lbs.	937 kg

MerCruiser Sterndrive Power

350 Mag MPI ECT B3	300 php	313 PkW
377 Mag MPI ECT B3	320 php	239 PkW
8.2 Mag ECT B3	380 php	283 PkW
8.2 Mag HO ECT B3	430 php	321 PkW

Volvo Penta Sterndrive Power

5.7 GiC DP	300 php	313 PkW
5.7 GXiC DP	320 php	239 PkW
8.1 GiC DP	400 php	298 PkW







The future of boating has arrived. Women and children first.



The larger, even roomier, more powerful A28 has been built for discriminating boaters of all ages.

With its three feet of extra space, the A28 amplifies the A25's proven virtues, none more important than a ride now approaching perfection. But we begin with looks, the handsomeness of an inverse hull whose complexity only yacht makers have seen fit to attempt, the sweep of a profile that can come only from Cobalt hand-craftsmanship. The A28 interior will wow, as a soft aura of luxury surrounds you and your guests. The bow is broader in the beam, roomy and then some, with immediately reconfigurable seating. More practicality here too, in the added head compartment and yet more storage.

In the quantum leaps in technology, among all its genuinely new features, the A28 shows forth hour upon skilled man-hour of refined Cobalt craftsmanship – in the upholstery, at the helm, in the rubbed perfection of the gelcoat – and the payoff comes in years of reliable, worry-free enjoyment.

But then, you knew that.

A28

ASERIES

A28

Specifications

Length Overall w/Swim Platform	28'6"	8.68 m
Beam	8' 6"	2.59 m
Interior Cockpit Width	88 1/2"	2.25 m
Deadrise at Transom	21°	21°
Fuel Capacity	90 gal.	341 L
Freshwater Capacity	10 gal.	38 L
Bridge Clearance w/o Bimini	4' 11"	1.50 m
Bridge Clearance w/Arch	90"	2.29 m
Draft Drive Up	30"	.76 m
Draft Drive Down	39"	.99 m
Dry Weight	5,460 lbs.	2,477 kg
Boat Certified Capacity	Yacht Certified	
Boat Certified Capacity w/Gear	Yacht Certified	

MerCruiser Sterndrive Power

8.2 Mag ECT B3	380 php	283 PkW
8.2 Mag HO ECT B3	430 php	321 PkW

Volvo Penta Sterndrive Power

8.1 GiC DP	400 php	298 PkW
------------	---------	---------



A SERIES





It's a free country. Boat accordingly.



The 26SD arrives, new to the line this year, eager to be precisely the boat you want it to be.

Designed to a single over-riding principle – fun follows function – the 26SD will answer your every demand for performance, for adaptability, for genuine innovation in the service of a happy, carefree day on the water. Ready with all the wide-open spaces of a deckboat, waiting with all the power and agility of a sportboat, the 26SD is every bit as much about skiing and wakeboarding as about quiet conversation on a leisurely cruise.

The 26SD's freeboard will create a ride as comfortable in coastal chop as on a mirrored lake, a hull that means quickness to plane and controlled stability in turns. Cockpit and bow alike are multi-taskers, the seating convertible every- which-way, the porta-potti all fiberglass, storage right where you need it.

Is this a great country, or what?

26SD
SD SERIES

26SD

26SD Specifications

Length Overall w/Swim Platform	27' 6"	8.38 m
Beam	8' 6"	2.59 m
Interior Cockpit Width	87"	2.20 m
Deadrise at Transom	21	21
Fuel Capacity	95 gal	360 L
Freshwater Capacity	10 gal	37.8 L
Bridge Clearance w/o Bimini	4' 11"	1.50 m
Bridge Clearance w/Arch or Tower	6' 7"	2.02 m
Draft Drive Up	27"	.69 m
Draft Drive Down	39"	.99 m
Dry Weight	5500 lbs	2495 kg
Boat Certified Capacity	Yacht Certified	
Boat Certified Capacity w/Gear	Yacht Certified	

MerCruiser Sterndrive Power

377 Mag MPI ECT B3	320 php	239 PkW
8.2 Mag ECT B3	380 php	283 PkW
8.2 Mag HO ECT B3	430 php	321 PkW

Volvo Penta Sterndrive Power

5.7 GXiC DP	320 php	239 PkW
8.1 GiC DP	400 php	298 PkW







If you're feeling the slightest bit light-headed,
please stop right here.



This boat has been proven to induce over-zealous responses from its owners. Everyone take a deep breath as we proceed.

Even lifelong bowrider folks are choosing the 243, having seen its dragsteresque acceleration, its Indy-car handling at top speeds, especially in the company of Cobalt hallmarks of value, in features both standard and optional. No sacrifice here of boorah performance in trade neither for a large and quite spectacular cabin, nor for a head compartment whose entry door is a masterpiece of double-duty engineering. The 243 uses its spaciousness to full effect, most especially in ski storage and in cockpit appliances where a sink console highlights an interior among Cobalt's most sophisticated ever. The cabin, splendid in its appointments, offers a full eight feet of bedtime berth, an oversized deck hatch and opening portal to bring in the sea air.

Full speed ahead then, weekenders and confirmed cuddy owners. Full speed ahead.

243
3 SERIES
SPORT CABINETS

243

Specifications

Length Overall w/o Swim Platform	23' 11"	(7.29 m)
Length Overall w/Swim Platform	25' 11"	(7.90 m)
Beam	8' 6"	(2.59 m)
Interior Cockpit Width	87"	(2.20 m)
Deadrise at Transom	21	(21)
Fuel Capacity	50 gal.	(189 L)
Freshwater Capacity	10 gal.	(38 L)
Holding Tank Capacity	10 gal.	(38 L)
Bridge Clearance w/o Bimini	5' 3"	(1.60 m)
Bridge Clearance w/Arch or Tower	8' 2"	(2.49 m)
Draft Drive Up	25"	(.64 m)
Draft Drive Down	37"	(.94 m)
Dry Weight	4850 lbs.	(2200 kg)
Boat Certified Capacity	13 persons	
Boat Certified Capacity w/Gear	2000 lbs.	(907) kg

MerCruiser Sterndrive Power

350 Mag MPI ECT B3	300 php	224 PkW
377 Mag MPI ECT B3	320 php	239 PkW
8.2 Mag ECT B3	380 php	283 PkW
8.2 Mag HO ECT B3	430 php	321 PkW

Volvo Penta Power Selections

5.7 GiC DP	300 php	224 PkW
5.7 GXiC DP	320 php	239 PkW
8.1 GiC DP	400 php	298 PkW







In designing the new 273,
we left no answer unquestioned.



Dual sliding doors to the cabin and head compartment.

After five decades of boat-building, assumptions come easily. With the 273, we challenged every one of them.

Cobalt wants you to have the easy grace and masterfully channeled power of a cruiser, its Mediterranean glamour, its style and substance. We also wanted you to enjoy the romance of a cuddy, with power underway and elegance afloat. So. We theorized that in the nexus of those features would come the 273, an amalgam of luxury, utility, convenience, comfort, and performance that speaks to the needs of essentially every owner. Perhaps the most inclusive boat Cobalt has ever built, the 273 brings roominess of interior spaces, rich textures and thoughtful appointments in the cabin, one-hand handling, and a silky ride. Genius.

Pure genius.

Anyway you look at it.

273
3 SERIES
SPORT CRUISE

273

Specifications

Length Overall w/o Swim Platform	27'6"	8.38 m
Length Overall w/Swim Platform	28'10"	8.79 m
Beam	8' 6"	2.59 m
Interior Cockpit Width	87"	2.20 m
Deadrise at Transom	21°	21°
Fuel Capacity	95 gal.	360 L
Freshwater Capacity	10 gal.	38 L
Holding Tank Capacity	10 gal.	38 L
Bridge Clearance w/o Bimini	4'11"	1.50 m
Bridge Clearance w/Arch or Tower	6'7"	2.02 m
Draft Drive Up	27"	.69 m
Draft Drive Down	39"	.99 m
Dry Weight	5,800 lbs	2631 m
Boat Certified Capacity	Yacht Certified	
Boat Certified Capacity w/Gear	Yacht Certified	

MerCruiser Power

Diesel TDI 3.0 B3	265 php	197 PkW
377 Mag MPI ECT B3	320 php	239 PkW
8.2 Mag ECT B3	380 php	283 PkW
8.2 Mag HO ECT B3	430 php	321 PkW

Volvo Penta Power

5.7 GXiC DP	320 php	239 PkW
8.1 GiC DP	400 php	298 PkW



3SERIES
SPORT COCKPITS





Sometimes, there's nothing to do but marvel
at the sheer wonder of it all.



The 303 comes prepared for the day's most perfect moments, no matter the time, no matter the position of the throttle.

The 303 is a go-anywhere, do-anything mix of functionality and flat-out style, a true dayboat ready for unforgettable exchanges of sunshine and moonlight. Spaciousness is key, of course, central to your enjoyment of the 303, especially in the cabin with its headroom for your six-foot friends and overnight, stretch-out slumber for two. In the cockpit, a place for everything, and everything serving some ultimate purpose. The tools of entertaining, from stereo to fridge to an optional cabin TV, stand near at hand, as the 303 fans out in wraparound welcome. Nimble at speed, responsive in the turns, its power thoughtfully applied and easily managed, the 303 adapts to the recreational needs of the moment, its striking good looks a handsome backdrop to a dash down the river, to a starlit interim at anchor. Wherein not one word needs to be said.

303

3SERIES
SPORT COCKPITS

303

303 Specifications

Length Overall w/o Swim Platform	29' 9"	9.07 m
Length Overall w/Swim Platform	31' 6"	9.60 m
Beam	9' 11"	3.02 m
Interior Cockpit Width	8' 8"	2.64 m
Deadrise at Transom	22°	22°
Fuel Capacity	150 gal.	568 L
Freshwater Capacity	30 gal.	114 L
Holding Tank Capacity	18 gal.	68 L
Bridge Clearance w/o Bimini	5' 9"	1.75 m
Bridge Clearance w/Arch or Tower	8' 2"	2.49 m
Draft Drive Up	26"	.66 m
Draft Drive Down	44"	1.12 m
Dry Weight	11,110 lbs	5039 kg
Boat Certified Capacity	Yacht Certified	
Boat Certified Capacity w/Gear	Yacht Certified	

Mercury Sterndrive Power

Twin 350 Mag MPI ECT B3	300 php	224 PkW
Twin 377 Mag MPI ECT B3	320 php	239 PkW
Twin 8.2 Mag ECT B3	380 php	283 PkW
Twin 8.2 Mag HO ECT B3	430 php	321 PkW

Volvo Penta Power Selections

Twin 5.7 GiC DP	300 php	224 PkW
Twin 5.7 GXiC DP	320 php	239 PkW
Twin 8.1 GiC DP	400 php	298 PkW







You make the joy. We make its mover.



The 323 will show its best self on red-letter days of your own devising.

The 323's big engines chug to full-rumble force, and the sense comes that today is going to be memorable, celebratory, different in the company of a boat so welcoming in its sheer size, its inclusiveness in an interior that bespeaks comfort and relaxation and easy, easy going. The storage is yawning. The attention to enjoyment's details meticulous: the flip-out table, the stainless and teak ladder to the bow, the cockpit seats nudged next to the sunpad for optimized lounging, all the right high-end appliances in the galley, the wet bar, a helm station aeronautically precise in its control of the 323's high, high horsepower. The cabin serves a couple's evening together or a small group of friends' game of hold 'em. The 323 is at cruise.

And a few hours of your life seem, subtly but assuredly, better.

323

3SERIES
SPORT CABINETS

323

Specifications

Length Overall w/o Swim Platform	32' 10"	10.00 m
Length Overall w/Swim Platform	34' 9"	10.59 m
Beam	10' 7"	3.23 m
Interior Cockpit Width	9' 0"	2.74 m
Deadrise at Transom	22	22
Fuel Capacity	174 gal.	659 L
Freshwater Capacity	18 gal	68 L
Holding Tank Capacity	28 gal.	106 L
Bridge Clearance w/o Bimini	6' 5"	1.96 m
Bridge Clearance w/Arch or Tower	8' 10"	2.69 m
Draft Drive Up	24"	.61 m
Draft Drive Down	35"	.90 m
Dry Weight	12300 lbs.	5579 kg
Boat Certified Capacity	Yacht Certified	
Boat Certified Capacity w/Gear	Yacht Certified	

Mercuriser Sterndrive Power

Twin 350 Mag MPI ECT B3	300 php	224 PkW
Twin 377 Mag MPI ECT B3	320 php	239 PkW
Twin 8.2 Mag ECT B3	380 php	283 PkW
Twin 8.2 Mag HO ECT B3	430 php	321 PkW

Volvo Penta Sterndrive Power

Twin 5.7 GiC DP	300 php	224 PkW
Twin 5.7 GXiC DP	320 php	239 PkW
Twin 8.1 GiC DP	400 php	298 PkW





Cobalt Transferable Warranty

See your Cobalt Dealer for written warranties detailing specific coverage information.



Personal integrity: in the people who build Cobalts, in the people who stand behind them.

The enduring enjoyment of your Cobalt will come in a personal relationship with your Cobalt dealer, who will introduce you to the choices waiting for you in the 2012 model line. And who will then support your decision long after the maiden cruise. Your Cobalt dealer will treat you like family, caring for your boat, helping you discover to their fullest the rewards of the boating lifestyle.

Each year, *Boating Industry* magazine announces its Top 100 marine dealers in North America. The marine industry's most prestigious and most demanding recognition of boat dealers, the Top 100 Awards speak to the entire dealership experience, asking customers to evaluate their satisfaction from earliest purchase inquiries through the delivery of the boat and on to service and storage and ongoing communication long after the sale. We're honored to say that, in the 2011 competition, our dealers composed over twenty percent of the awards, with more Cobalt dealerships in the Top 100 than any other independent manufacturer's.

Discover the difference. Visit your nearest Cobalt dealer, where a new friend is waiting for you with a smile and a handshake.

And a key to a boat that for years to come will remain a testament to your sound, your knowledgeable, your very good judgment.



Ten Year Protection

Hull & Deck Structure: Floors, stringers, bulkheads, motor mounts, transom, all deck and hull joints

Five Year Protection

Engine: Internally lubricated parts

Stern Drive: Internally lubricated parts in upper and lower housings, stern drive control system: power steering pump, power steering cooler, TVM module, TVM cylinder, joystick

Intermediate Housing: Shaft, U-joints, bearings

Steering: Helm, rack, cable, pump, seals and gaskets

Power Trim: Pump, cylinders, solenoids, switches, seals and gaskets

Electrical: Alternator, voltage regulator, electronic ignition module, ignition coil, starter motor, wiper motor, engine wiring harness, courtesy lights, docking lights, battery switch, battery isolator, bow light, horn, anchor light, spotlight, blower motor, electric hatch motor and switch

Fuel Delivery: Fuel injection control units and injectors, fuel injection pump, fuel injector rails, fuel delivery pump, flame arrestor

Controls: Control box, neutral safety switch, cables

Instrumentation: Tachometer, oil pressure, volt gauge, hour meter, speedometer, engine temperature, trim gauge, fuel gauge, air/water temperature

Accessories: Air conditioner, cockpit heater, engine battery charger, compass, depth finder, transducer and wiring harness, generator, refrigerator, galley sink and faucet, shore power, stainless steel deck railings, stainless steel rubrail, stainless steel hardware, stereo/CD player, amplifier(1), dash stereo remote, trim tabs, freshwater pump, toilet, stove, microwave, windlass

Electronics: Radar, GPS, VHF radio

Non-Defect Failures: Overheating, pre-ignition, detonation, scored pistons, scored cylinders, tuliped valves, carbonized rings, heat collapsed rings, burnt valves, bent valves, warped heads, heat cracked heads and block (excludes freezing), thermostat failures, sensor failures

Additional Benefits: Choice of towing, dock side assistance, hoist and lift out or pick up and delivery. Taxes, shop supplies, lubricants, coolants, filters, spark plugs, hoses, clamps, belts, engine tuning, and lake/sea trial when necessary for a covered repair.

Three Year Protection

Gelcoat Finish: Protection from stress cracks, air voids or blisters

Upholstery/Canvas: Protection from defective materials or workmanship

Components: Manufactured by Cobalt

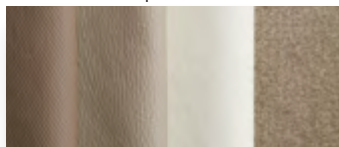
See written warranties for specific coverage information. Coverage is subject to change and may vary outside the U.S.A.

Colors and Graphics Selections

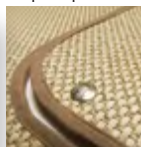
Actual colors may vary due to the limitations of the printing process and the light under which they are viewed.

COCKPIT INTERIORS

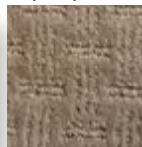
SAND INTERIOR
with standard carpet



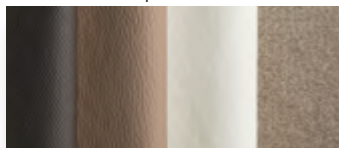
SEA GRASS
carpet option



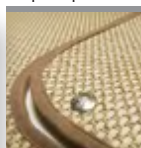
WATER WEAVE
carpet option



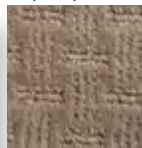
TERRA BROWN INTERIOR
with standard carpet



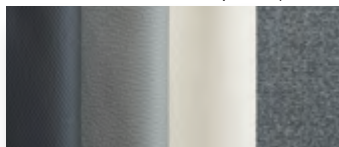
SEA GRASS
carpet option



WATER WEAVE
carpet option

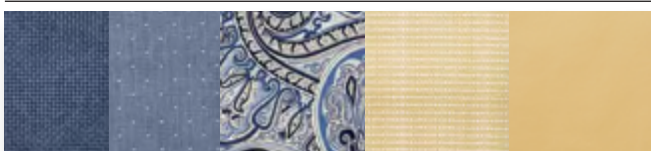


SUMMIT GREY INTERIOR
available with standard carpet only

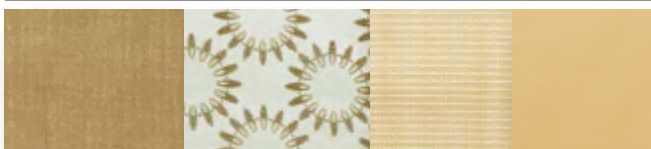


CABIN INTERIORS

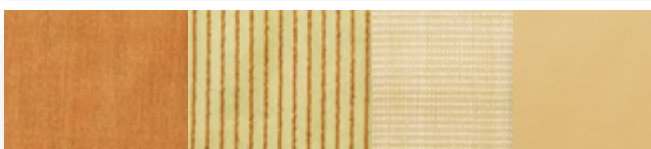
COASTAL BLUE



SEA SPRAY



SUNSET



GELCOAT AND GRAPHICS



From the clean crisp look of all white to the richness of three color custom the gelcoat is a principal ingredient of these boats' beauty, a principal determinant of a Cobalt's appearance and enduring value. Cobalt's gelcoat offers superior repairability, matchless clarity, and high-gloss buff back, with blister resistance far superior to standard gelcoats. Greater flexibility in the gelcoat reduces cracking. A comprehensive three-year warranty guarantees the gelcoat finish against stress cracks, air voids, and blisters.

Spend some time in consideration here. Then take your imagination down to the sea: visit the **Design Your Dream** section of CobaltBoats.com to build a preview of your new Cobalt. Complete color selection, available optional equipment, engine choices, and current retail pricing are just a few clicks away.

3 COLOR CUSTOM GRAPHICS

White base gelcoat with any primary hull color plus an accent. Available on all models.



SPORT GRAPHICS

A white hull with a single accent stripe. Available on all models.



3 COLOR CUSTOM WITH DECK STRIPE

3 Color Custom with the addition of a deck stripe. Available on the 222, 232 only.



SPORT WITH DECK STRIPE

A white hull with a single accent stripe and deck stripe. Available on the 222, 232 only.



CLASSIC GRAPHICS

One primary hull color with an all white deck. Available on all models.



ALL WHITE

An all white hull and deck. Available on all models.



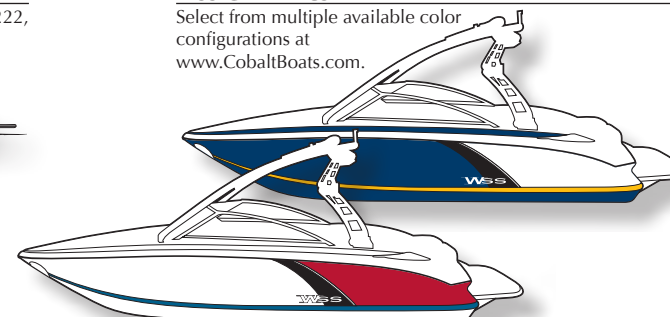
CLASSIC WITH DECK STRIPE

One primary hull color with a deck stripe. Available on the 222, 232 only.



WSS GRAPHICS

Select from multiple available color configurations at www.CobaltBoats.com.



Standard & Optional Equipment



1



Your new Cobalt arrives with the basics of the good life already aboard -- comfort, convenience, luxury, and an unmistakable sense of security. Now comes the optional equipment to help you make the best use of your boat.

1. Flip Down Swim Step
2. Bimini Top
3. Hardtop on Stainless Steel Arch
4. Bow and Cockpit Tonneau Covers
5. Bimini Top on Stainless Steel Arch
6. Bimini Enclosure
7. Mooring Cover



2



3



4



5

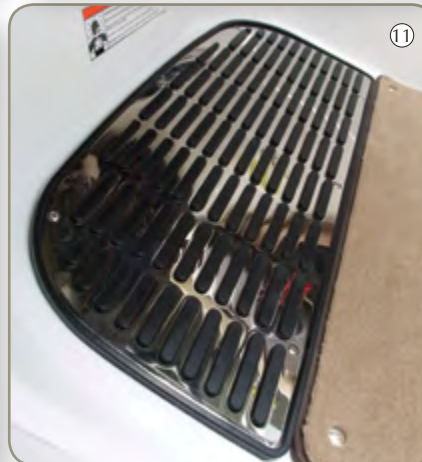


6



7

Standard & Optional Equipment



Spend some time in consideration here. Then take your imagination down to the sea: visit the "Design Your Dream" section of CobaltBoats.com.

- 1-2. Fender Clips w/Line (4)
- 3. Windlass w/Line, Chain & Anchor
- 4. Docking Lights, Stainless Steel
- 5. Sof-Trac Swim Platform Mat
- 6. Transom Walk-Thru Gate
- 7. Transom Shower
- 8. Swim Platform Transom Lighting
- 9. In-dash GPS
- 10. Stainless Steel Flagpole
- 11. Foot Tread, Stainless Steel
- 12. Underwater Lighting

Standard & Optional Equipment

O = Optional S = Standard

Canvas	200	210	220	230	222	232	242	262	276	296	302	26SD	A25	A28	243	273	303	323	200WSS	210WSS	220WSS	230WSS	222WSS	232WSS	242WSS	262WSS
Bimini Enclosure Package															O	O	O	O								
Bimini Top w/SS Adj. Stanchions	O	O	O	O	O	O	O	O	O	O	O	O	O	O	O	O	O	S								
Bow Tonneau Cover	O	O	O	O	O	O	O	O	O	O	O	O	O	O					O	O	O	O	O	O	O	O
Cockpit Tonneau Cover	O	O	O	O	O	O	O	O	O	O	O	O	O	O	O	O	O	O	O	O	O	O	O	O	O	O
Mooring Cover	O	O	O	O	O	O	O	O	O	O	O	O	O	O	O	O	O	O	O	O	O	O	O	O	O	O
Dash & Instrumentation	200	210	220	230	222	232	242	262	276	296	302	26SD	A25	A28	243	273	303	323	200WSS	210WSS	220WSS	230WSS	222WSS	232WSS	242WSS	262WSS
Accessory Power Plug - 12 Volt	S	S	S	S	S	S	S	S	S	S	S	S	S	S	S	S	S	S	S	S	S	S	S	S	S	S
Aluminum Dash Panels	S	S	S	S	S	S	S	S	S	S	S	S	S	S	S	S	S	S	S	S	S	S	S	S	S	S
Binnacle Mount Control-Single Engine										S																
Black Leather/SS Steering Wheel					S	S	S	S	S	S	S	S	S	S	S	S	S	S					S	S	S	S
Compass	O		O							S	S		S	S		S	S	S	O		O					
Compass (digital)									S	S			S	S		S										
Composite Helm Eyebrow, Custom Stitching	S	S	S	S	S	S	S	S	S	S	S	S	S	S	S	S	S	S	S	S	S	S	S	S	S	S
Dash Dimmer Switch	S	S	S	S	S	S	S	S	S	S	S	S	S	S	S	S	S	S	S	S	S	S	S	S	S	S
Depth & Water/Air Temp Gauge Pkg.	O	S	O	S	S	S	S	S	S	S	S	S	S	S	S	S	S	S	O	S	O	S	S	S	S	S
GPS w/Weather, Touch Screen w/Maps	O	O	O	O	O	O	O	O	O	O	O	O	O	O	O	O	O	O	O	O	O	O	O	O	O	O
GPS, Touch Screen w/Maps	O	O	O	O	O	O	O	O	O	O	O	O	O	O	O	O	O	S	O	O	O	O	O	O	O	O
GPS, Touch Screen w/Maps & Radar											O						O									
Hour Meter(s)	S	S	S	S	S	S	S	S	S	S	S	S	S	S	S	S	S	S	S	S	S	S	S	S	S	S
Illuminated Switch Panel/Switches					S	S	S	S	S	S		S	S	S	S	S							S	S	S	S
Leather Steering Wheel w/Auto Leveling Hub	S	S	S	S															S	S	S	S				
Livorsi Engine Controls-Single Engine										O																
Livorsi Engine Controls-Twin Engines										S	S						S	S								
Rudder Indicator, Merc									O	O		O	O	O		O										
Rudder Indicator, Volvo									O	O		O	O	O		O										
Stainless Steel Switches	S	S	S	S	S	S	S	S	S	S	S	S	S	S	S	S	S	S	S	S	S	S	S	S	S	S
VHF Radio Unit																	O	O								
Windshield Wiper-Starboard										O	O				O	O	O	O								
Woodgrain Dash/Trim Package	O	O	O	O	O	O	O	O	S	O	O	S	S	S	O	S	O	S								
Exterior	200	210	220	230	222	232	242	262	276	296	302	26SD	A25	A28	243	273	303	323	200WSS	210WSS	220WSS	230WSS	222WSS	232WSS	242WSS	262WSS
Anchor Locker	S	S	S	S	S	S	S	S	S	S	S	S	S	S	S	S	S	S	S	S	S	S	S	S	S	S
Arch Lighting, Bi-Color									O	O						O										
Arch Lighting, LED									S	S	S					S	S	S								
Arch, Aluminum, Fwd. Folding w/Bimini	O		O																S	S	S	S	S	S	S	S
Black Chrome "Cobalt" Letters																										
Bow LED Docking Lights												S														
Bow Boarding Ladder, SS												S														
Bow Scuff Plate, Stainless Steel	S	S	S	S	S	S	S	S	S	S	S	S	S	S	S	S	S	S	S	S	S	S	S	S	S	S
Cobalt Oval Logo, Recessed	O	O	O	O	O	O	O	O	O	O	O	O			O	O	O	O								
Deck Stripe					O	O																	O	O		
Docking Lights-Stainless Steel	O	O	O	O	O	O	O	O	O	O	O		O	O	O	O	O	O	O	O	O	O	O	O	O	O
Extended Running Surface	S	S	S	S	S	S	S	S	S	S	S	S	S	S	S	S	S	S	S	S	S	S	S	S	S	S
Fender Clips w/Line (4)	O	O	O	O	O	O	O	O	O	O	O	O	O	O	O	O	O	O	O	O	O	O	O	O	O	O
Fender Storage Locker, Stbd.														S												
Fender Storage Lockers, Port & Stbd.													S													
Flagpole w/Flag	O	O	O	O	O	O	O	O	O	O	O	O	O	O	O	O	O	O								
Flip-Down Swim Step w/Ladder		O		O	O	O	O	O	O	O	O				O	O	O	O		O		O	O	O	O	O
Flip-Down Swim Step w/o Ladder	O	O	O	O	O	O	O	O	O	O	O	S			O	O	O	O	O	O	O	O	O	O	O	O
Foredeck Sunpad															O	O										
Graphics, Molded-In Gelcoat	S	S	S	S	S	S	S	S	S	S	S	S	S	S	S	S	S	S	S	S	S	S	S	S	S	S
Graphics, WSS																			S	S	S	S	S	S	S	S
Lights, Tower																			O	O	O	O	O	O	O	O
Midship Cleats	S	S	S	S	S	S	S	S	S	S	S	S	S	S	S	S	S	S	S	S	S	S	S	S	S	S
Motorbox Actuator					O	O	O	O	S	S	S	S	S	S	O	S	S	S					O	O	O	O
Portal Light (1 in Head Compartment)							O	O	O	O	O	O						S							O	O
Portal Lights (4)																S	S	S								
Portal Lights-2 (1-head, 1-aft cabin)															O											
Portal Lights-2 (fwd. cabin)															S											
Retractable Dock Lines (locking)										O	O						O	O								
Shower Package (Bow & Transom)												O														

O = Optional S = Standard

Standard & Optional Equipment

Exterior (continued)	200	210	220	230	222	232	242	262	276	296	302	26SD	A25	A28	243	273	303	323	200WSS	210WSS	220WSS	230WSS	222WSS	232WSS	242WSS	262WSS
Ski Pylon - Stainless Steel				S	S	S	S	S	S	S		S	S	S	S	S						S	S	S	S	S
Ski Tow Eye - Stainless Steel	S	S	S								S						S	S	S	S	S					S
Sof-Trac Mat (std swim platform)	O	O	O	O	O	O	O	O	O	O	O		O	O	O	O	O	O	S	S	S	S	S	S	S	S
Sof-Trac Mat (swim platform w/step)	O	O	O	O	O	O	O	O	O	O	O	O			O	O	O	O	S	S	S	S	S	S	S	S
Spotlight w/Helm Remote																	O	O								
SS Tubular Platform Perimeter Rail		S		S	S	S	S	S	S	S	S	S	S	S	S	S	S	S		S		S	S	S	S	S
Stainless Steel Arch w/Bimini Top									O	O	O		O	O		O	O	O								
Stainless Steel Arch w/Hard Top										O	O						O	O								
Stainless Steel Bow Rails 10"															O	O	O	O								
Stainless Steel Engine Vents		S		S	S	S	S	S	S	S	S				S	S	S	S		S		S	S	S	S	S
Stainless Steel Foredeck Ladder																		S								
Stainless Steel Foredeck Rails																	S	S								
Stainless Steel Hull Accents												S	S	S												
Stainless Steel Tower w/Bimini Top		O		O	O	O	O	O							O											
Stainless Steel Tower w/Sunshade		O		O	O	O	O	O																		
Stainless Steel Windshield											O						O	O								
Stainless Top Trim Windshield	S	S	S	S			S	S	S	S		S	S	S	S	S			S	S	S	S	S	S	S	S
Swim Platform, Hydraulic w/Ladder													O	O												
Swim Platform, Extended w/Ladder	S	S	S	S	S	S	S	S		S	S		S	S	S		S	S	S	S	S	S	S	S	S	S
Swim Platform, Integrated w/Ladder									S							S										
Swim Platform, Integrated w/Flip-Down Swim Step												S														
Swim Platform Transom Lighting		O		O	O		O	O	O	O	O	O	O	O	O	O	O	O		O		O	O		O	O
Teak Accent Package										O	O						O	O								
Teak Swim Platform & Aft Walk-Thru									O							O										
Three Color Custom Graphics	O	O	O	O	O	O	O	O	O	O	O	O	O	O	O	O	O	O								
Transom Shower		O		O	O	O	O	O	O	O	O	O	O	O	O	O	O	O		O		O	O	O	O	O
Transom Storage Locker						S	S	S			S						S	S						S	S	S
Transom Tilt Switch	O	O	O	O	O	O	O	O	O	O		O	O	O	O	O			O	O	O	O	O	O	O	O
Underwater Lighting						O	O	O	O	O	O	O	O	O	O	O	O	O						O	O	O
Wakeboard Racks w/Swivel (requires Ski Tower)		O		O	O	O	O	O							O											
WSS Tower, Razor w/Boardtracks & Bimini																			S	S	S	S				
WSS Tower, Switchblade w/Boardtracks & Bimini																							S	S	S	S
Interior	200	210	220	230	222	232	242	262	276	296	302	26SD	A25	A28	243	273	303	323	200WSS	210WSS	220WSS	230WSS	222WSS	232WSS	242WSS	262WSS
Aft Sunpad w/Adjustable Backrest	O		O				S	S	S		S	S	S	S	S	S	S	S	O		O				S	S
Aft Sunpad w/Walk-Thru Transom	S	S	S	S	S	S	S	S	S	S	S	S	S	S	S	S	S	S	S	S	S	S	S	S	S	S
Aft Walk-Thru Carpet	O	O	O	O	O	O	O	O	O	S	S	O	S	S	S	O	S	S	O	O	O	O	O	O	O	O
Aft Walk-Thru Filler Cushion(s)	O	O	O	O	O	O				O									O	O	O	O	O	O		
Aft Walk-Thru Gate	O		O				O	O			O	O	O	O	O		O	O	O		O				O	O
Air Compressor w/Holder	O	O	O	O	O	O	O	O	O	S	S	O	O	O	O	O	S	S	O	O	O	O	O	O	O	O
Air Conditioning/Heating (12,000 BTU)																	O	O								
Bench Seat Storage	S	S	S	S	S	S	S	S	S	S	S	S	S	S	S	S	S	S	S	S	S	S	S	S	S	S
Bow Center Cushion Insert	O	O	O	O	O	O			O	O		O	O	O					O	O	O	O	O	O		
Bow Cushion Inserts, Port & Stbd.							S	S			S														S	S
Bow Seating, Convertible							S	S	S	S	S	S	S	S											S	S
Bow Walk-Thru Door(s)	S	S	S	S	S	S	S	S	S	S	S	S	S	S					S	S	S	S	S	S	S	S
Cabin Filler Cushion																	O	S								
Cabin Table/Filler Cushion Pkg.															O	O										
Cabin/Head Entry Doors (sliding)															S	S										
Carpet, 40 oz., Snap-In w/Neoprene Back	S	S	S	S	S	S	S	S	S	S	S	S	S	S	S	S	S	S	S	S	S	S	S	S	S	S
Carpet, Waterweave (Sand & Terra)	O	O	O	O	O	O	O	O	O	O	O	O	O	O	O	O	O	O	O	O	O	O	O	O	O	O
Cedar-Lined Hanging Locker																	S	S								
Chiller Plate (cockpit)															O	O										
Club Seating										O																
Cockpit Heater									O	O	O	O			O	O	O	O								
Cockpit Storage Console								S				S				S										
Dinette Table w/bow & cockpit receptacle										O		O	O													
Dinette Table w/cockpit receptacle	O	O	O	O	O	O	O	O	O		S			S	O	O	S	S	O	O	O	O	O	O	O	O
Faucet, Cockpit Sink									O			O				O										
Floor Covering, Sea Grass (Sand & Terra)	O	O	O	O	O	O	O	O	O	O	O	O	O	O	O	O	O	O	O	O	O	O	O	O	O	O
Foredeck Step "Euro Style"																O										

Specifications and equipment are subject to change without notice. See your Cobalt dealer for details.

Standard & Optional Equipment

O = Optional S = Standard

Interior (continued)	200	210	220	230	222	232	242	262	276	296	302	26SD	A25	A28	243	273	303	323	200WSS	210WSS	220WSS	230WSS	222WSS	232WSS	242WSS	262WSS
Galley, Cabin																	S	S								
Galley, Cockpit										O	S	S		S			S									
Grey Water System									O	O	O	O		O		O	O	O								
Head Compartment w/Shower																	S	S								
Head w/Electric Porcelain Toilet							O	O	O			O			O	O	S								O	O
Head w/Electric Porcelain Toilet, Macerator							O	O	O			O			O	O	O								O	O
Head w/Porta Potti							O	S	S			S		S	S	S									O	S
Head w/Pump Out Porta Potti							O	O	O	S	S	O		O	O	O									O	O
Head w/Pump Out Porta Potti, Macerator							O	O	O	O	O	O		O	O	O									O	O
Head w/VacuFlush										O	O						O	S								
Head w/VacuFlush, Macerator										O	O						O	O								
Helm Seat, Extended Width									S			S	S	S		S										
Helm Seat, Double-Wide											S						S	S								
Helm Seat, Double-Wide w/Adj. Backrest										S																
Helm Seat, Flip-Up Bucket	S		S																S		S					
Helm & Passenger Seats, Flip-Up Buckets		S		S	S	S	S	S							S				S	S	S	S	S	S	S	S
Microwave																	S	S								
Motorbox, Cushions (replaces Pillows)										O																
"L" Lounge Cockpit Seating	S		S	S	S	S	S	S	S	S	S	S	S	S	S	S	S	S	S		S	S	S	S	S	S
Passenger Seat, Double-Wide w/Adj. Backrest										S																
Passenger Seat Flip Backrest System									S		S	S	S	S		S	S	S								
Refrigerator										O	O	O		O			O	S								
Remote Courtesy Lights w/key fob	O	O	O	O	O	O	O	O	O	O	O	O	O	O	O	O	O	O	O	O	O	O	O	O	O	O
Removable Bow & Cockpit Carpet	S	S	S	S	S	S	S	S	S	S	S	S	S	S					S	S	S	S	S	S	S	S
Removable Cockpit Carpet															S	S	S	S								
Removable Ice Chest	S		S																S		S					
Seating Varadense Comfort	S	S	S	S	S	S	S	S	S	S	S	S	S	S	S	S	S	S	S	S	S	S	S	S	S	S
Shore Power Kit-110 Volt w/battery charger											O						O	S								
Shore Power Kit-220 Volt w/battery charger											O						O	O								
Sink Console (Head Compartment)							O	O	S	S	S	O		S	O	S	S	S							O	O
Sink Console, Cockpit															O											
Stainless Steel Foot Tread (helm & passenger)													O													
Stainless Steel Foot Tread (helm only)		O		O	O	O	O	O	O	O	O	O		O	O	O	O	O		O		O	O	O	O	O
Stove (110 Volt)																	O	S								
Throw Pillows, cockpit							O	O	O	O	O	O	O	O	O	O	O	O							O	O
Trash Receptacle								S	S	S	S	S				S										S
WSS Custom Interior (piping, monograms)																			S	S	S	S	S	S	S	S
Stereo	200	210	220	230	222	232	242	262	276	296	302	26SD	A25	A28	243	273	303	323	200WSS	210WSS	220WSS	230WSS	222WSS	232WSS	242WSS	262WSS
AM-FM, Single CD Stereo w/6 Premium Speakers	S	S	S	S	S	S	S	S	S	S	S	S	S	S	S	S	S	S	S	S	S	S	S	S	S	S
Cabin Entertainment Package (TV/DVD)															O	O	O	O								
Cable TV Connection																	O	O								
Ipod/MP3 Port	S	S	S	S	S	S	S	S	S	S	S	S	S	S	S	S	S	S	S	S	S	S	S	S	S	S
Premium Sound System w/Transom Remote	O	O	O	O	O	O	O	O	O	O	O	O	O	O	O	O	O	O	O	O	O	O	O	O	O	O
Premium Sound w/Transom Remote & Speakers	O	O	O	O	O	O	O	O	O	O	O	O	O	O	O	O	O	O	O	O	O	O	O	O	O	O
Satellite Radio System	O	O	O	O	O	O	O	O	O	O	O	O	O	O	O	O	O	O	O	O	O	O	O	O	O	O
Speakers, WSS Tower-1 pr.																			O	O	O	O	O	O	O	O
Stereo Remote, Dash	S	S	S	S	S	S	S	S	S	S	S	S	S	S	S	S	S	S	S	S	S	S	S	S	S	S
Stereo Remote, Transom	O	O	O	O	O	O	O	O	O	O	O	O	O	O	O	O	O	O	O	O	O	O	O	O	O	O
Tower Speakers-SS Tower (req. Prem. Sound, Dual Batt.)		O		O	O	O	O	O							O											
TV Antenna (Arch mounted)																	O	O								
Structure, Safety & Performance	200	210	220	230	222	232	242	262	276	296	302	26SD	A25	A28	243	273	303	323	200WSS	210WSS	220WSS	230WSS	222WSS	232WSS	242WSS	262WSS
10/5/3 Year Warranty Protection	S	S	S	S	S	S	S	S	S	S	S	S	S	S	S	S	S	S	S	S	S	S	S	S	S	S
Ballast System, Manual																								O	O	O
Ballast System, Touch-Tech 3-Rider																								O	O	O
Battery Switch, Dual w/VSR	O	O	O	O	O	O	O	O	O	S	S	O	O	O	O	O	S	S	O	O	O	O	O	O	O	O
Battery Switch, Single	S	S	S	S	S	S	S	S	S	S		S	S	S	S	S			S	S	S	S	S	S	S	S
Battery Tender/Charger, 110v	O	O	O	O	O	O	O	O	O	O		O	O	O	O	O			O	O	O	O	O	O	O	O
Battery Tender/Charger, 220v	O	O	O	O	O	O	O	O	O	O		O	O	O	O	O			O	O	O	O	O	O	O	O
Captain's Call Exhaust		O		O	O	O	O	O	O	O	O	O			O	O	O	O			O		O	O	O	O
Captain's Call Exhaust - Merc only													O	O												

O = Optional S = Standard

Standard & Optional Equipment

Structure, Safety & Performance (continued)	200	210	220	230	222	232	242	262	276	296	302	26SD	A25	A28	243	273	303	323	200WSS	210WSS	220WSS	230WSS	222WSS	232WSS	242WSS	262WSS
Captain's Call Plus (w/Mufflers)		O		O	O	O	O	O	O	O	O	O			O	O	O	O		O		O	O	O	O	O
Captain's Call Plus (w/Mufflers) - Merc only													O	O												
CE Requirements w/Auto Fire Ext (w/Gen)																	O	O								
CE Requirements w/Automatic Fire Extinguisher	O	O	O	O	O	O	O	O	O	O	O	O	O	O	O	O	O	O	O	O	O	O	O	O	O	O
Circuit Breaker Protected Elec System	S	S	S	S	S	S	S	S	S	S	S	S	S	S	S	S	S	S	S	S	S	S	S	S	S	S
Composite Floor	S	S	S	S	S	S	S	S	S	S	S	S	S	S	S	S	S	S	S	S	S	S	S	S	S	S
Composite Seat Bases	S	S	S	S	S	S	S	S	S	S	S	S	S	S	S	S	S	S	S	S	S	S	S	S	S	S
Composite Transom	S	S	S	S	S	S	S	S	S	S	S	S	S	S	S	S	S	S	S	S	S	S	S	S	S	S
Cruise Control w/GPS Technology	O	O	O	O	O	O	O	O	O	O		O	O	O	O	O			O	O	O	O	O	O	O	O
Cruise Control, Volvo w/EVC	O	O	O	O	O	O	O	O	O	O	O	O	O	O	O	O	O	O	O	O	O	O	O	O	O	O
Driver's Rearview Mirror																			O	O	O	O	O	O	O	O
Fiberglass Cockpit Liner	S	S	S	S	S	S	S	S	S	S	S	S	S	S	S	S	S	S	S	S	S	S	S	S	S	S
Fiberglass Stringer System	S	S	S	S	S	S	S	S	S	S	S	S	S	S	S	S	S	S	S	S	S	S	S	S	S	S
Fire Extinguisher, Automatic System	O	O	O	O	O	O	O	O	O	O	O	O	O	O	O	O	O	O	O	O	O	O	O	O	O	O
Fire Extinguisher, Manual	S	S	S	S	S	S	S	S	S	S	S	S	S	S	S	S	S	S	S	S	S	S	S	S	S	S
Generator (5kw)																	O	O								
Hot Water Heater (110 Volt)																		S								
Ignition Safety Switch	S	S	S	S	S	S	S	S	S	S	S	S	S	S	S	S	S	S	S	S	S	S	S	S	S	S
Kevlar Reinforced Hull	S	S	S	S	S	S	S	S	S	S	S	S	S	S	S	S	S	S	S	S	S	S	S	S	S	S
Stainless Steel Windshield Braces	S	S	S	S	S	S	S	S	S	S	S	S	S	S	S	S	S	S	S	S	S	S	S	S	S	S
Through Prop Exhaust	S	S	S	S	S	S	S	S	S	S	S	S	S	S	S	S	S	S	S	S	S	S	S	S	S	S
Tool Kit	O	O	O	O	O	O	O	O	O	O	O	O	O	O	O	O	O	O	O	O	O	O	O	O	O	O
Trim Tabs					O	O	O	O	O	O	O	O	O	O	O	O	O	S					O	O	O	O
Windlass w/Line, Chain & Anchor							O	O	O	O	O			O	O	O	O	O						O	O	O
MerCruiser Sterndrive Power	200	210	220	230	222	232	242	262	276	296	302	26SD	A25	A28	243	273	303	323	200WSS	210WSS	220WSS	230WSS	222WSS	232WSS	242WSS	262WSS
4.3 L MPI ECT Alpha - 220 php (164 PkW)	O	O	O																O	O	O					
4.3 L MPI ECT B3 - 220 php (164 PkW)	O	O	O																O	O	O					
5.0 L MPI ECT Alpha - 260 php (194 PkW)	O	O	O		O														O	O	O					
5.0 L MPI ECT B3 - 260 php (194 PkW)	O	O	O	O	O														O	O	O	O	O			
350 Mag MPI ECT B3 - 300 php (224 PkW)	O	O	O	O	O	O	O	O				O	O		O				O	O	O	O	O	O	O	O
377 Mag MPI ECT B3 - 320 php (239 PkW)			O	O	O	O	O	O				O	O		O	O					O	O	O	O	O	O
8.2 Mag ECT B3X - 380 php (283 PkW)				O		O	O	O	O	O		O	O	O	O	O						O		O	O	O
8.2 Mag HO ECT B3X - 430 php (321 PkW)				O		O	O	O	O	O		O	O	O	O	O						O		O	O	O
Twin 350 Mag MPI ECT B3 - 300 php (224 PkW)									O	O							O	O								
Twin 377 Mag MPI ECT B3 - 320 php (239 PkW)									O	O							O	O								
Twin 8.2 Mag ECT B3X - 380 php (283 PkW)									O	O							O	O								
Twin 8.2 Mag HO ECT B3X - 430 php (321 PkW)									O	O							O	O								
Volvo Penta Sterndrive Power	200	210	220	230	222	232	242	262	276	296	302	26SD	A25	A28	243	273	303	323	200WSS	210WSS	220WSS	230WSS	222WSS	232WSS	242WSS	262WSS
4.3 GXi SX - non catalyst - 225 php (168 PkW)	O	O	O																O	O	O					
4.3 GXi DP - non catalyst - 225 php (168 PkW)	O	O	O																O	O	O					
5.0 GXiC SX - 270 php (201 PkW)	O	O	O		O														O	O	O					
5.0 GXiC DP - 270 php (201 PkW)	O	O	O	O	O														O	O	O	O	O			
5.7 GiC DP - 300 php (224 PkW)	O	O	O	O	O	O	O	O					O		O				O	O	O	O	O	O	O	O
5.7 GXiC DP - 320 php (239 PkW)			O	O	O	O	O	O				O	O		O	O					O	O	O	O	O	O
8.1 GiC DP - 400 php (298 PkW)				O		O	O	O	O	O		O	O	O	O	O						O		O	O	O
Twin 5.7 GiC DP - 300 php (224 PkW)									O	O							O	O								
Twin 5.7 GXiC DP - 320 php (239 PkW)									O	O							O	O								
Twin 8.1 GiC DP - 400 php (298 PkW)									O	O							O	O								
Engine Options	200	210	220	230	222	232	242	262	276	296	302	26SD	A25	A28	243	273	303	323	200WSS	210WSS	220WSS	230WSS	222WSS	232WSS	242WSS	262WSS
Anti Corrosion System	O	O	O	O	O	O	O			O	O	O	O		O		O		O	O	O	O	O	O	O	O
Axius Basic (inc. DTS)-Merc twin										O																
Axius Premier (includes DTS)-Merc twin											O							O	O							
DTS (Merc)	O	O	O	O	O	O	O	O	O	O	O	O	O	O	O	O	O	O	O	O	O	O	O	O	O	O
EVC (Volvo)	O	O	O	O	O	O	O	O	O	O	O	O	O	O	O	O	O	O	O	O	O	O	O	O	O	O
Joystick Sterndrive (includes EVC)-Vol twin										O	O							O	O							
Ocean-X (Volvo)	O	O	O	O	O	O	O	O	O	O	O	O	O	O	O	O	O	O	O	O	O	O	O	O	O	O
Seacore (Merc)	O	O	O	O	O	O	O	O	O	O	O	O	O	O	O	O	O	O	O	O	O	O	O	O	O	O

OUTFIT YOUR COBALT AND CREW



Choose from a wide selection of premium apparel and accessories. Visit us online at www.CobaltSports.com for seasonal specials and featured new merchandise.



SHOP ONLINE AT COBALTSports.COM

Cobalt Boats • 1715 N 8th St • Neodesha, KS 66757
Tel. 800-468-5764 • Fax. 620-325-2361 • www.CobaltBoats.com

Copyright © 2011 - 2012, all rights reserved • Printed in the U.S.A. • Specifications and equipment lists are subject to change without notice.
iPod™ is a trademark of the Apple Company • Kevlar® is a registered trademark of the Dupont Chemical Company